

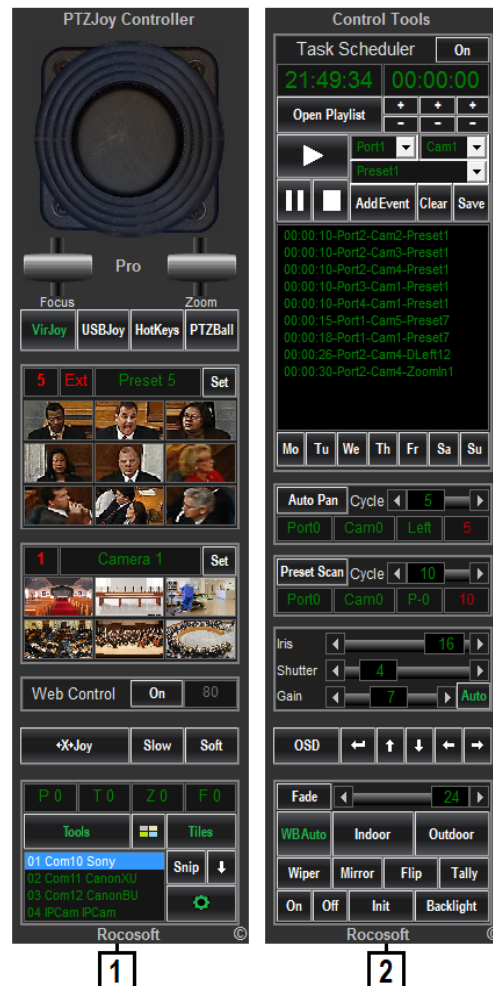
## Rocosoft PTZJoy™ Pro Controller Software

Rocosoft **PTZJoy Pro** Controller Software allows users to manage robotic PTZ cameras directly from a PC, Tablet, TriCaster, vMix, or any other Live Production System.

Control cameras locally with a USB Joystick, Virtual On-Screen Joystick, Keyboard hotkeys, use a Web Browser for far-end camera control from any device over a LAN, Wi-Fi, or WAN IP Network, or launch our innovative PTZPad Visual Control Panel.

### Key Features:

- Precise control of Pan/Tilt/Zoom/Focus/Iris functions with any USB Joystick
- Supports all Professional and Gaming USB Joysticks
- Allows selection between 4 connected USB Joysticks with 4 Button Mapping Profiles per Joystick
- Easily customize USB Joysticks with up to 30 Buttons to your liking
- Simultaneous Pan, Tilt, and Zoom Joystick Control with Variable Speed
- Smooth Camera Control with on-screen Virtual Joystick
- Convenient Camera Control with Directional Buttons
- Control 24 Serial and 6 IP cameras from one computer with universal software
- Convenient plug and play COM port setup
- Save and recall 255 Internal and 32 External camera presets
- Control the speed of preset recall
- 18 Visual Preset Tiles for Internal and External Camera Presets
- Customize Preset Tiles with your own graphics or images
- Sniping tool to crop images off the screen to use them as background for Tiles
- Far-end camera control from any computer or smartphone using a Web Browser
- Convenient keyboard shortcuts
- Camera Control from external programs using Macros and HTTP requests
- PTZJoy Controller can be ordered as IP only, VISCA only, or Universal IP/VISCA. Cameras of a different brand and protocol can be managed from the same interface
- Automation with AutoPan, PresetScan, and Task Scheduler
- Easy OSD menu access and Speed Monitor
- PTZPad Visual Control Panel
- Exposure Settings
- Soft Joystick Mode
- X-Joystick Mode & 3 Slow Joystick Modes
- Start with Windows
- Minimize to the Taskbar



1. Main Panel

2. Control Tools Panel

### Supported Cameras

**IP Cameras:** **Sony:** All SRG, BRC, Ipela, **NewTek:** NDIHX PTZ1, **Panasonic:** All, **PTZOptics:** All, **Datavideo:** All, **Lumens:** All, **iSmart:** All.

#### Serial Port Cameras:

**Sony:** All Sony BRC/EVI/SRG Series PTZ Cameras

**Vaddio:** RoboShot, ClearVIEW HD-18-19-20-HD-USB, PowerView HD-22-30, and WallVIEW HD-18-19

**NewTek:** NDIHX-PTZ1

**HuddleCam HD:** 3X, 10X, 12x, 18x, 20x, 30x

**PTZOptics:** 12x-IP, 12x-USB, 20x-IP, 20x-USB

**Lumens:** VC-A20P, VC-A202P, VC-G30, VC-G50, VC-200

**Datavideo:** PTC-120, PTC-100

**Canon:** XU-80, XU-81, BU-46h, BU-47h, BU-51h

All Cameras that use **Sony VISCA Protocol** over RS-232, RS-422, RS-485, USB

**Pelco:** All Pelco security, dome, and video-conferencing ptz cameras that use Pelco protocol

### Software

**OS** Windows Vista, 7, 8, 10

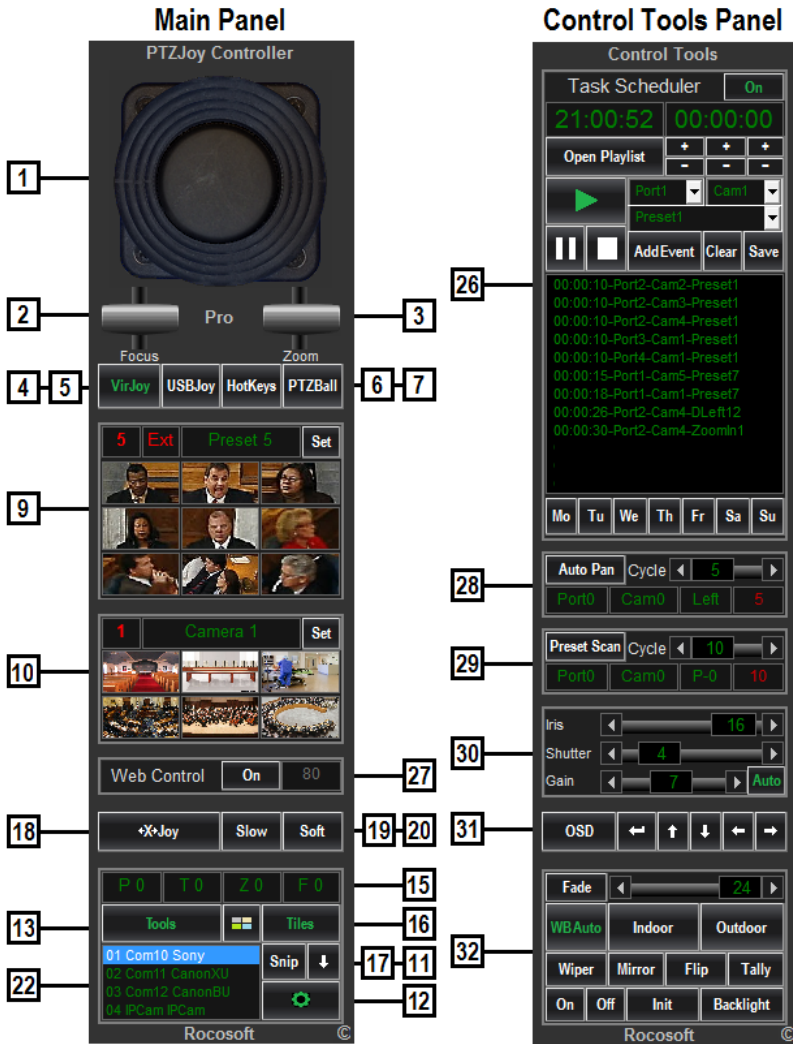
**Licensing** 1 computer per license. License never expires.

### Digital Download

Software and License—links sent via email

Quick Start Guide/User Manual—links sent via email

Rocosoft PTZJoy™ Pro Controller Software. Narrow Mode



- 1. Virtual Joystick**  
Click and drag to move camera in corresponding direction
- 2. Focus Lever**  
Focus Near/Far. Double click for Auto
- 3. Zoom Lever**  
Zoom In/Out
- 4. Virtual Joystick Button**  
Select for camera control using Virtual Joystick
- 5. USB Joystick Button**  
Select for camera control using connected USB Joystick
- 6. Keyboard Shortcuts Button**  
Select for camera control using keyboard shortcuts
- 7. PTZBall Button**  
Select for camera control using trackball, mouse, trackpad as a joystick
- 9. Preset Management Section**  
One click Preset Recall buttons. Set Presets. Change Preset Names, Call Presets, Configure Visual Tiles, Switch between Internal and External Presets
- 10. Camera Management Section**  
Name cameras. Switch Cameras
- 11. Minimize Button**  
Minimize program to the task bar
- 12. Configuration Button**  
Open Configuration Panel
- 13. Control Tools Button**  
Opens control tools and video settings panel
- 15. Speed Display**  
Shows the current pan, tilt, zoom, focus speed
- 16. Visual Preset Tiles Button**  
Activate Visual Preset Tiles.
- 17. Snipping Tool Button**  
Crops images from the screen and saves them as .jpg files
- 18. X-Joystick Button**  
Limits camera movement to the x-axis only
- 19. SlowMode Button**  
Limited top speed with Virtual and USB joysticks
- 20. SoftMode Button**  
Soft speed acceleration with Virtual and USB joysticks
- 22. Port Display Window**  
Displays information about active Ports

- 26. Event Scheduler**  
Creates playlists for pre-determined control of PTZ camera(s) at specific times
- 27. Web Control**  
Control Cameras from any device with a Web Browser
- 28. Auto Pan**  
Set camera to pan back and forth at a specified time interval
- 29. Preset Scan**  
Scan presets at a specified time interval

- 30. Exposure Settings**  
Auto. Iris. Shutter. Gain
- 31. OSD Menu access**  
On-screen Display Menu Access
- 32. Utilities**  
Camera ON/OFF, Tally Light, Backlight, Mirror Image, Wiper, Camera Initiate, White Balance